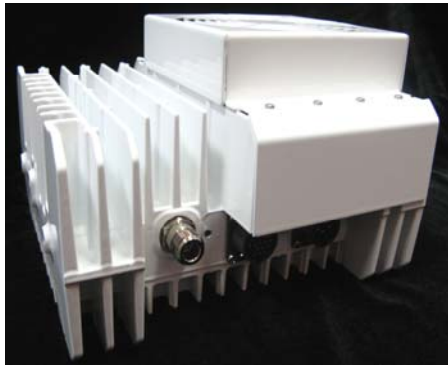




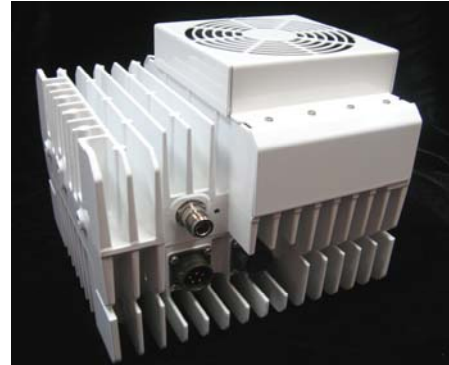
# 25W Ku-Band BUC

*VSAT™ Series* are ideal for Broadband VSAT RF terminal.

- **44dBm Min. output power**
- **Optional DC thru MS con, Int. source**
- **RoHS Compliance**
- **36~60VDC or 85~265VAC Power**
- **DC Power 230W Max. (VAC:250W)**
- **Two years Warranty**



**DC Version**



**AC Version**

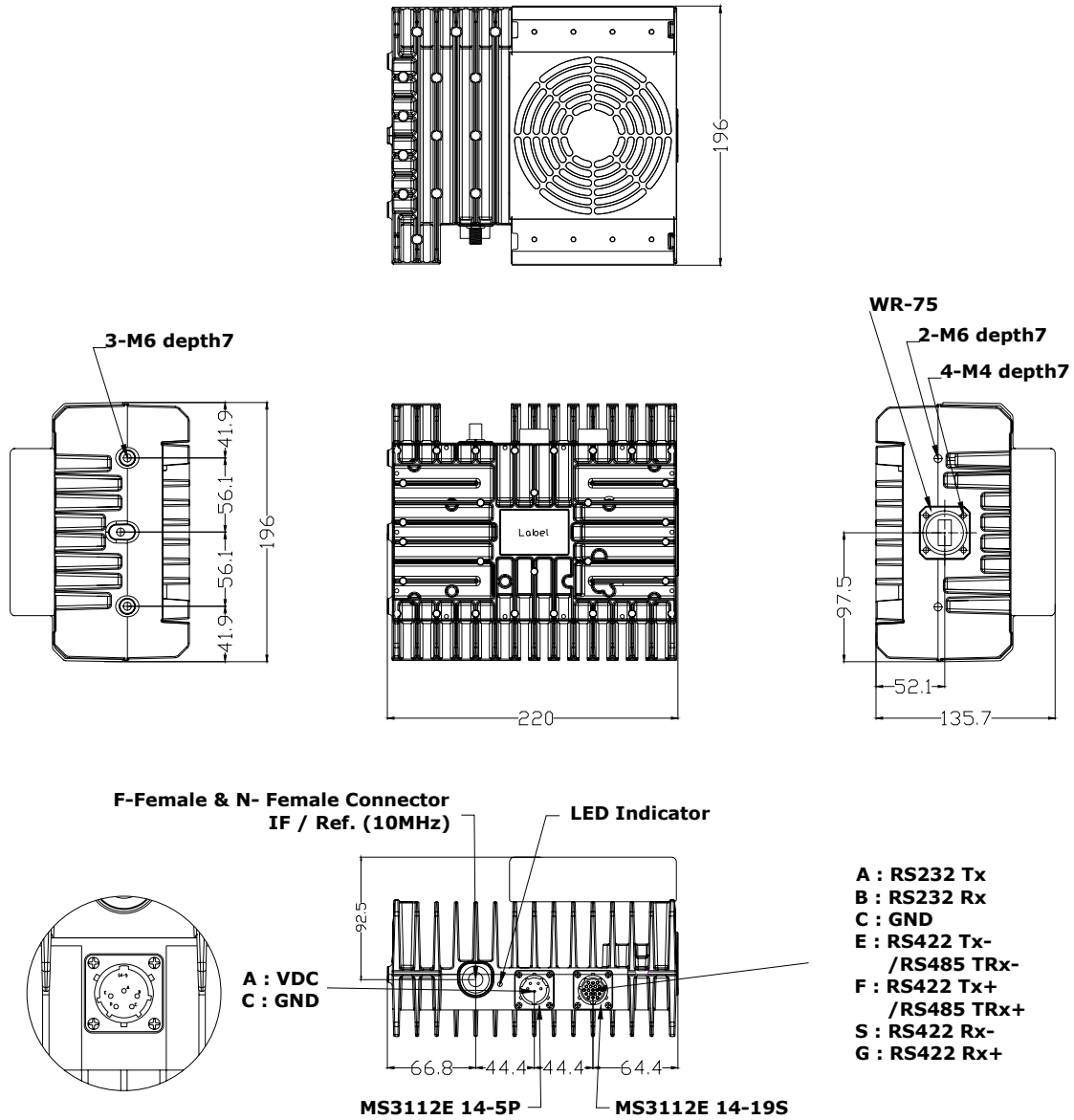
## Model

Model Number	Description	RF Band IF	Band	Output Power
TB44APF(N)E-08 (DC)	25W Ku BUC, Std, F/N Type	14.00-14.50 (GHz)	950-1450 (MHz)	+44dBm
TB44APF(N)E-09 (AC)				
TB44BPF(N)E-08 (DC)	25W Ku BUC Low, F/N Type	13.75-14.25 (GHz)	950-1450 (MHz)	+44dBm
TB44BPF(N)E-09 (AC)				
TB44CPF(N)E-08 (DC)	25W Ku BUC Ext, F/N Type	13.75-14.50 (GHz)	950-1700 (MHz)	+44dBm
TB44CPF(N)E-09 (AC)				



# 25W Ku-Band BUC

## Mechanical Drawing (DC)

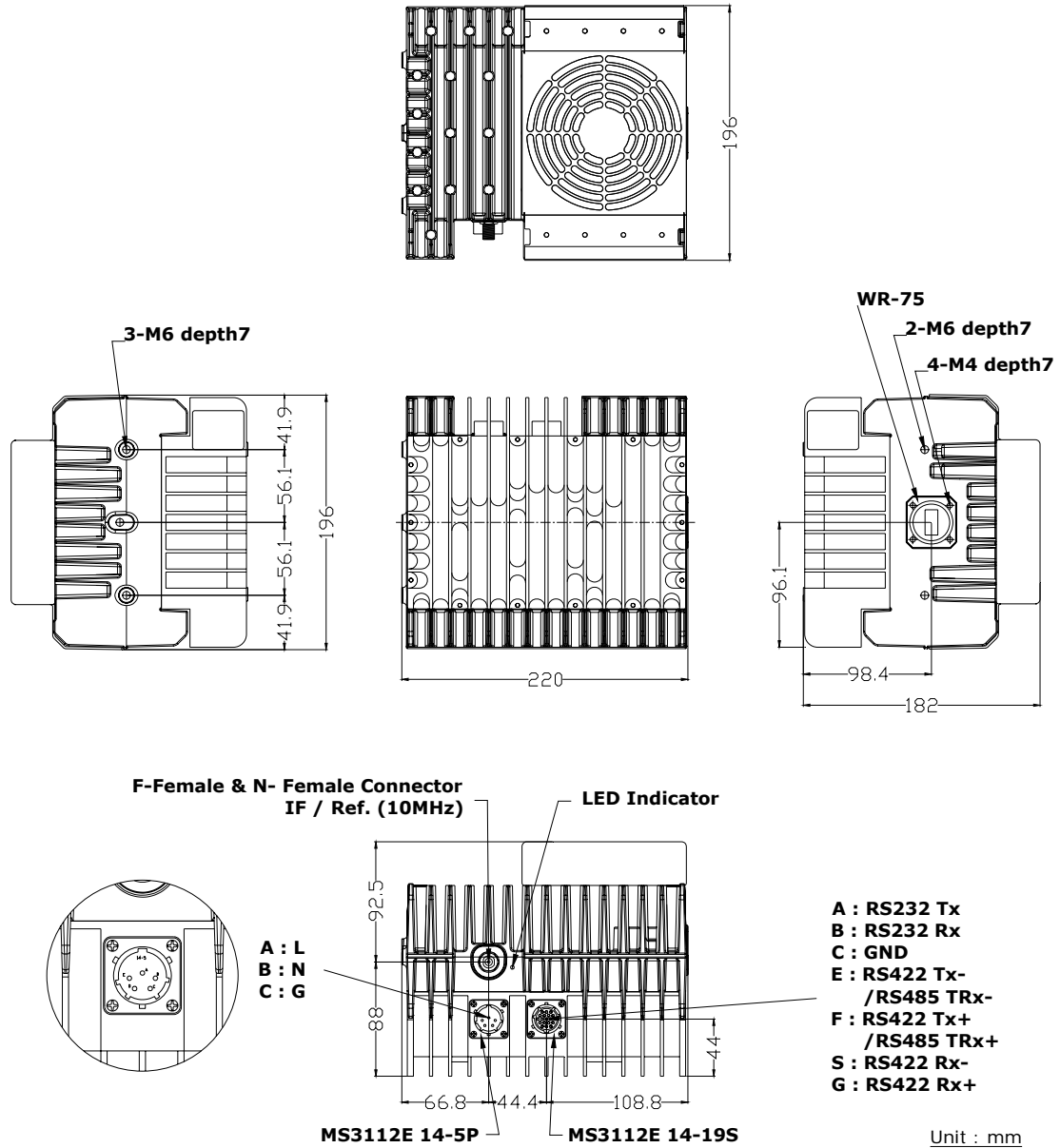


Unit : mm



# 25W Ku-Band BUC

## Mechanical Drawing (AC)





# 25W Ku-Band BUC

## Specifications

Parameters	Specifications
<b>Input Characteristics</b>	
Frequency Range	A : 950 ~ 1450 MHz B : 950 ~ 1450 MHz C : 950 ~ 1700 MHz
Impedance	75 Ohm , 50 Ohm
VSWR	2 : 1
Interface	F-Type or N-Type
<b>Output Characteristics</b>	
Frequency Range	A : 14.00 ~ 14.50 GHz (LO Freq = 13.05GHz) B : 13.75 ~ 14.25 GHz (LO Freq = 12.80GHz) C : 13.75 ~ 14.50 GHz (LO Freq = 12.80GHz)
1dB Compression Point	Min. 44 dBm
VSWR	2 : 1
Interface	WR75G
<b>Transfer Characteristics</b>	
Frequency Sense	Non-inverted
Linear Gain	Typical 70 dB
Tx Gain Range	15dB Variable in 0.5 dB Steps via M&C
Gain Variation	Over 54 MHz 1.5 dB Over the whole Bandwidth 4 dB Over Operating Temperature 4 dB
Spurious	In band -60 dBc Out of band -50 dBc
Phase Noise	100Hz -60 dBc/Hz 1KHz -70 dBc/Hz 10KHz -80 dBc/Hz 100KHz -90 dBc/Hz
<b>Miscellaneous</b>	
External Reference	Input Freq. 10MHz Input Power -5 to +5dbm@Input Port Phase Noise(dBc/Hz) -125(@100Hz),-135(@1kHz),-140(@10kHz)
M&C	Interface RS-485/ RS-232, RS-422, M&C Optionally Mute Control Via M&C Interface or disconnecting 10MHz Reference Status LED Bicolor : RED - Alarm ; Green - Operational Function CMD HPA On/Off , Gain Control, Address Change Function TLM Output Power Level(15dB Dynamic Range), Out-of-lock Alarm, Temperature, Summary Alarm
Operating Voltage	DC/AC,MilitaryCircular 36~60 VDC / 85-265VAC
Power Consumption	Max. 230W (VAC:250W)
Operating Temperature	-40 - +55 °C Operational -40 - +75 °C Storage
Humidity	Up to 100%
Dimensions / Weight	220 X 195 X 136 (DC), 220 X 195 X 181 (AC) (mm), 5Kg (DC/DC Ver.), 6Kg (AC/DC Ver.), Mounting Jig (Add up + 1Kg each)