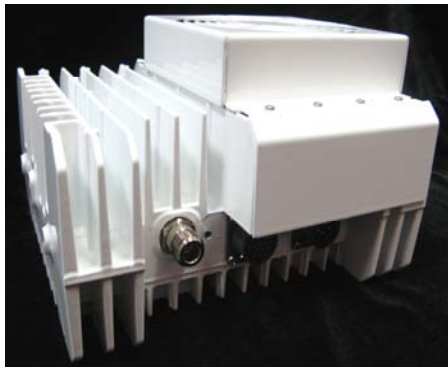




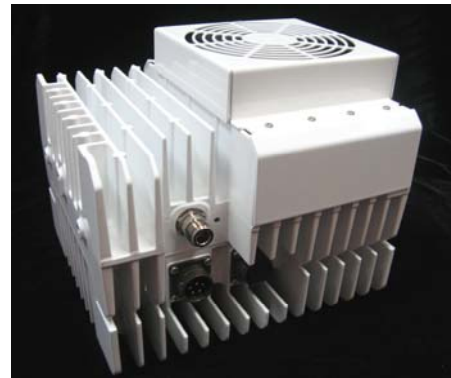
20W C-Band BUC

VSAT™ Series are ideal for Broadband VSAT RF terminal.

- **43dBm min. output power**
- **RoHS Compliance**
- **36~60VDC or 85~265VAC**
- **DC Power 180W (VAC : 220W)**
- **Two years Warranty**



DC Version



AC Version

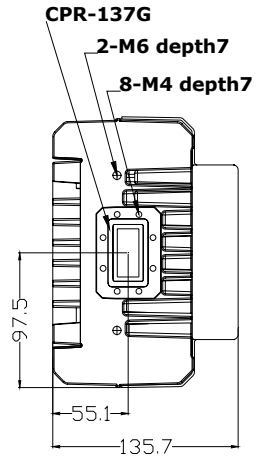
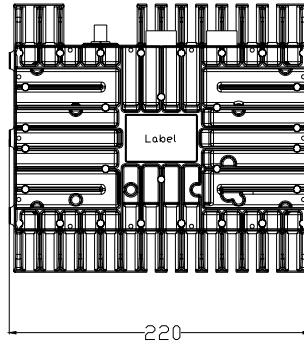
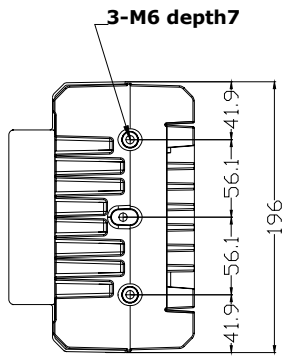
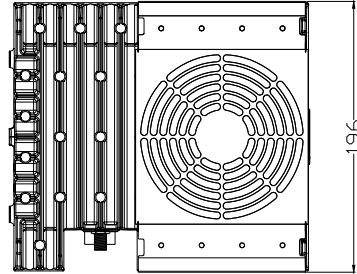
Model

Model Number	Description	RF Band (GHz)	IF Band (MHz)	Output Power (dBm)
TA43APF(N)E-08(DC)	20W,Std, F/N (Opt. MS Connector)	5.85– 6.425 (GHz)	950-1525 (MHz)	+43dBm
TA43APF(N)E-09(AC)				
TA43BPF(N)E-08(DC)	20W,Palapa, F/N (Opt. MS Connector)	6.425-6.725 (GHz)	1150-1450 (MHz)	+43dBm
TA43BPF(N)E-09(AC)				
TA43CPF(N)E-08(DC)	20W, Insat, F/N (Opt. MS Connector)	6.725-7.025 (GHz)	975 - 1275 (MHz)	+43dBm
TA43CPF(N)E-09(AC)				



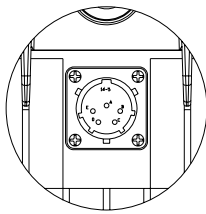
20W C-Band BUC

Mechanical Drawing (DC)

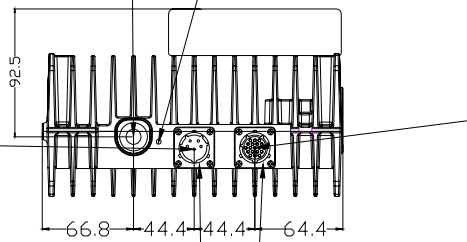


F-Female & N- Female Connector
IF / Ref. (10MHz)

LED Indicator



A : VDC
C : GND



MS3112E 14-5P

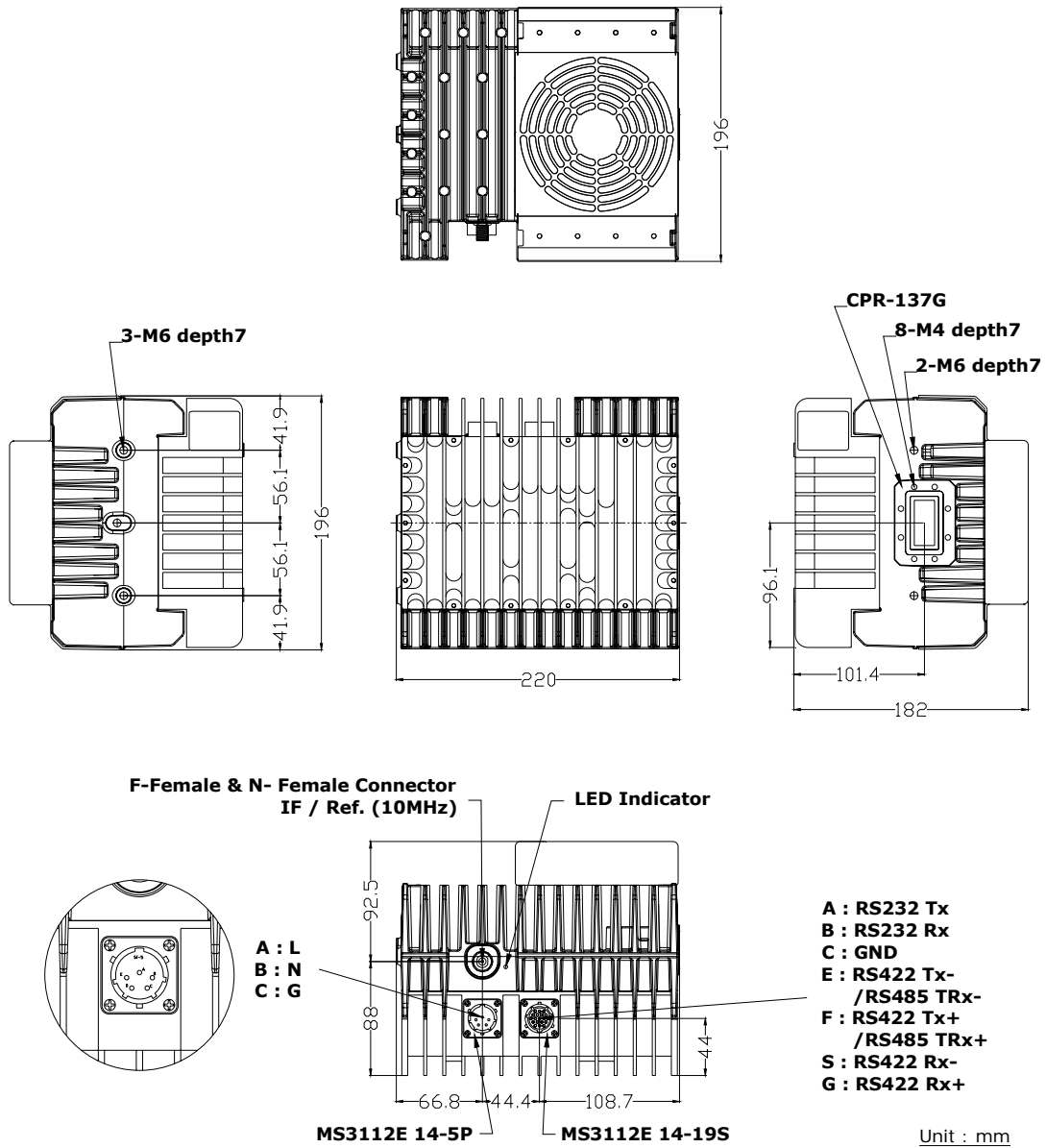
MS3112E 14-19S

- A : RS232 Tx
- B : RS232 Rx
- C : GND
- E : RS422 Tx-
/RS485 TRx-
- F : RS422 Tx+
/RS485 TRx+
- S : RS422 Rx-
- G : RS422 Rx+



20W C-Band BUC

Mechanical Drawing (AC)





20W C-Band BUC

Specifications

Parameters	Specifications
Input Characteristics	
Frequency Range	A : 950 ~ 1525 MHz B : 1150 ~ 1450 MHz C : 975 ~ 1275 MHz
Impedance	75 Ohm , 50 Ohm
VSWR	2 : 1
Interface	F-Type or N-Type
Output Characteristics	
Frequency Range	A : 5.85 ~ 6.425 GHz (LO-4.9 GHz) B : 6.425 ~ 6.725 GHz (LO-5.275 GHz) C : 6.725 ~ 7.025 GHz (LO-5.75 GHz)
1dB Compression Point	Min. 43 dBm
VSWR	2 : 1
Interface	WR75G
Transfer Characteristics	
Frequency Sense	Non-inverted
Linear Gain	Typical 70 dB
Tx Gain Range	15dB Variable in 0.5 dB Steps via M&C
Gain Variation	Over 54 MHz 1.5 dB Over the whole Bandwidth 4 dB Over Operating Temperature 4 dB
Spurious	In band -60 dBc Out of band -50 dBc
Phase Noise	100Hz -60 dBc/Hz 1KHz -70 dBc/Hz 10KHz -80 dBc/Hz 100KHz -90 dBc/Hz
Miscellaneous	
External Reference	Input Freq. 10MHz Input Power -5 to +5dbm@Input Port Phase Noise(dBc/Hz) -125(@100Hz),-135(@1kHz),-140(@10kHz)
M&C (Optional)	Interface RS-485/ RS-232, RS-422, M&C Optionally Mute Control Via M&C Interface or disconnecting 10MHz Reference Status LED Bicolor : RED - Alarm ; Green - Operational Function CMD HPA On/Off , Gain Control, Address Change Function TLM Output Power Level(15dB Dynamic Range), Out-of-lock Alarm, Temperature, Summary Alarm
Operating Voltage	DC/AC,MillitaryCircular 36~60 VDC / 85-265VAC
Power Consumption	Max. 180W (VAC:220W)
Operating Temperature	-40 - +55 °C Operational -40 - +75 °C Storage
Humidity	Up to 100%
Dimensions / Weight	220 X 195 X 136 (DC), 220 X 195 X 181 (AC) (mm) 5Kg (DC/DC Ver.), 6Kg (AC/DC Ver.), Mounting Jig (Add up + 1Kg each)